

Sécuriser la connexion wifi – version VISTA

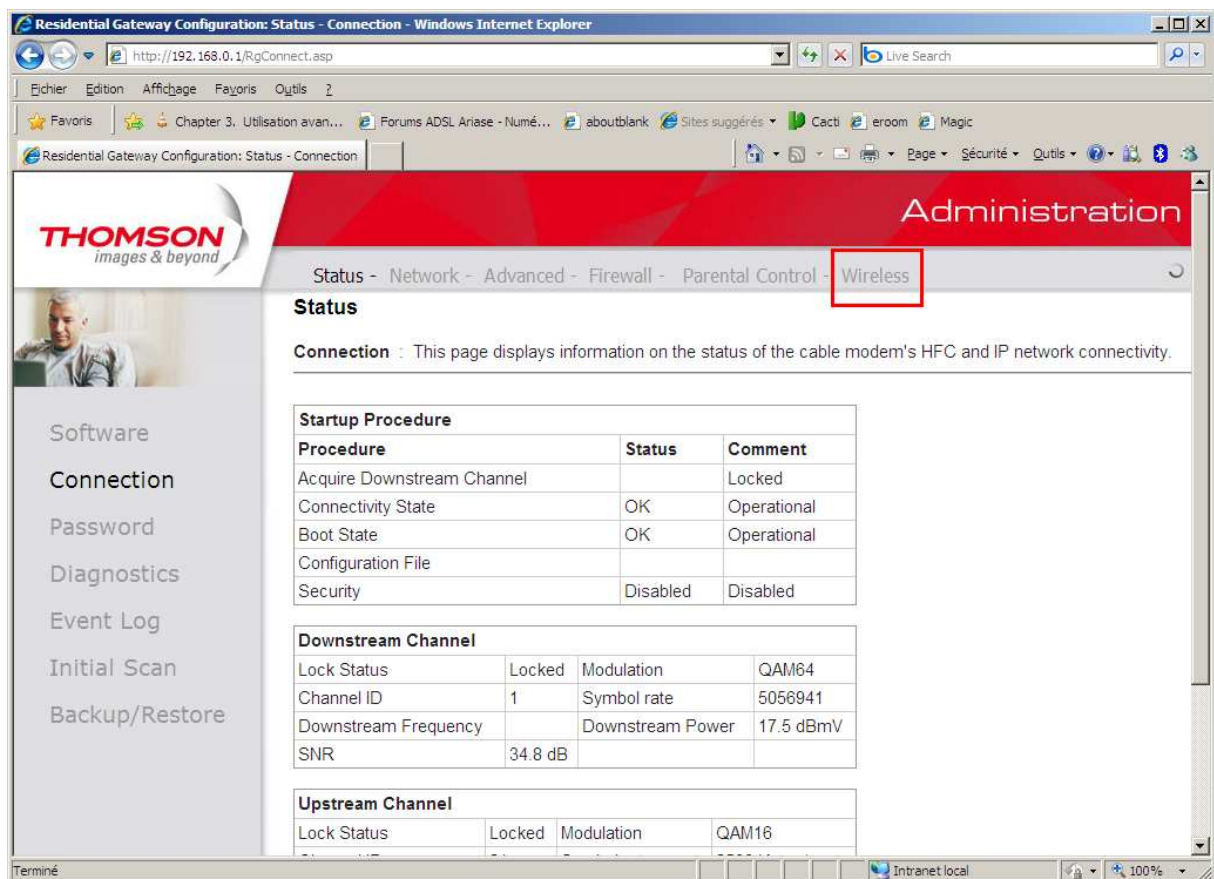
Procédure configuration wifi avancée :

1. Se connecter en Ethernet au Modem.
Ouvrir un navigateur web.
Taper l'URL : http://192.168.0.1


2. Remplir le champ « mot de passe » avec la valeur « admin »



3. Cliquer sur « Wireless »



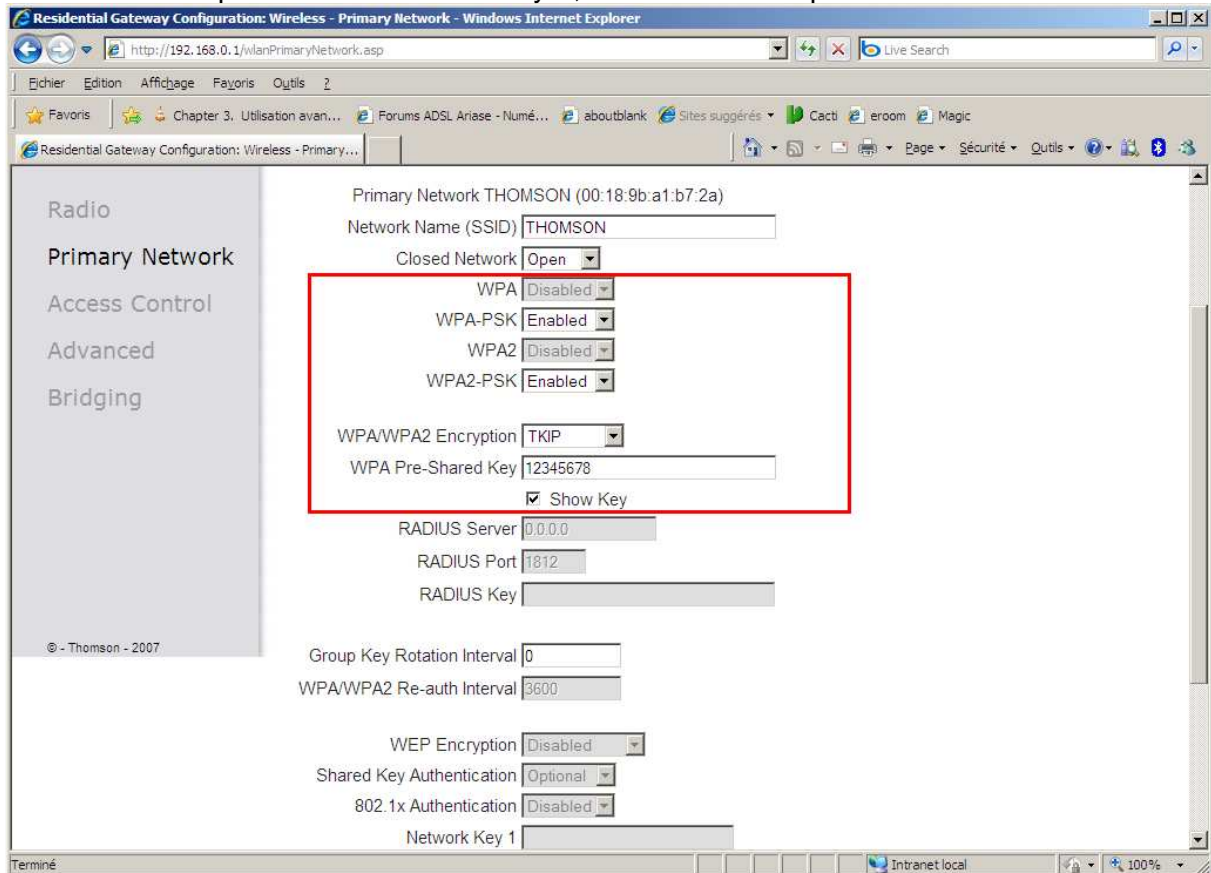
4. Dans le menu de gauche, cliquer sur « Primary Network »



The screenshot shows a web browser window titled "Residential Gateway Configuration: Wireless - Radio Configuration - Windows Internet Explorer". The address bar shows the URL "http://192.168.0.1/wlanRadio.asp". The browser's menu bar includes "Fichier", "Édition", "Affichage", "Favoris", and "Outils". The page content is divided into a left sidebar and a main content area. The sidebar features the Thomson logo and a navigation menu with the following items: "Radio", "Primary Network" (highlighted with a red box), "Access Control", "Advanced", and "Bridging". The main content area has a red header with the word "Administration" and a breadcrumb trail: "Status - Network - Advanced - Firewall - Parental Control - Wireless". Below this, the "Wireless" section is titled, followed by a description: "802.11 Radio : This page allows configuration of the Wireless Radio including current country and channel number." The configuration fields are: "Interface" (set to "Enabled"), "Wireless MAC Address" (00:18:9b:a1:b7:2a), "New Channel" (set to "11"), and "Current Channel" (11). At the bottom of the configuration area are two buttons: "Apply" and "Restore Wireless Defaults".

5. Sélectionner « Enabled » dans les champs « WPA-PSK ».

Dans le champ « WPA Pre-shared Key », entrer un mot de passe d'au moins 8 caractères



Residential Gateway Configuration: Wireless - Primary Network - Windows Internet Explorer

http://192.168.0.1/wlanPrimaryNetwork.asp

Fichier Edition Affichage Favoris Outils 2

Favoris Chapter 3. Utilisation avan... Forums ADSL Ariase - Numé... aboutblank Sites suggérés Cacti eroom Magic

Residential Gateway Configuration: Wireless - Primary...

Radio

Primary Network

Access Control

Advanced

Bridging

© - Thomson - 2007

Primary Network THOMSON (00:18:9b:a1:b7:2a)

Network Name (SSID) THOMSON

Closed Network Open

WPA Disabled

WPA-PSK Enabled

WPA2 Disabled

WPA2-PSK Enabled

WPA/WPA2 Encryption TKIP

WPA Pre-Shared Key 12345678

Show Key

RADIUS Server 0.0.0.0

RADIUS Port 1812

RADIUS Key

Group Key Rotation Interval 0

WPA/WPA2 Re-auth Interval 3600

WEP Encryption Disabled

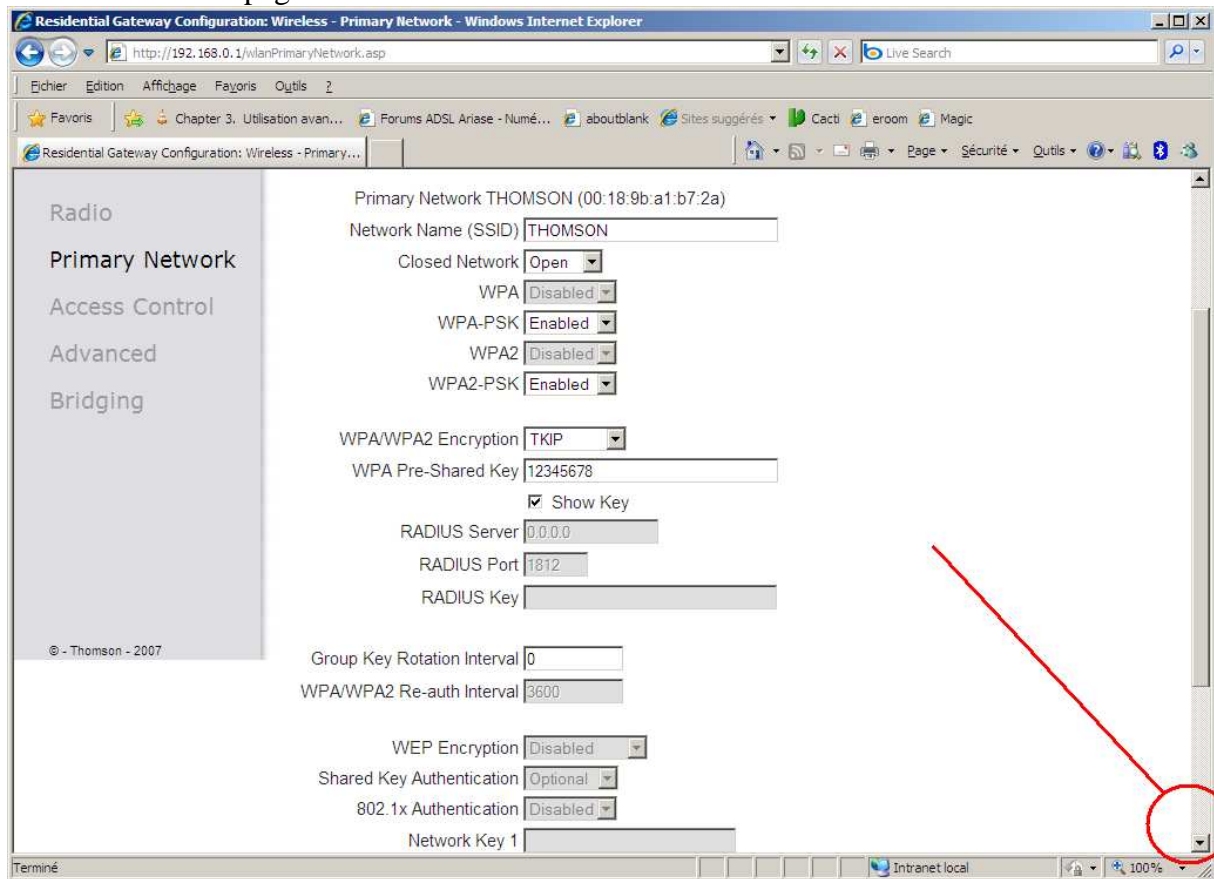
Shared Key Authentication Optional

802.1x Authentication Disabled

Network Key 1

Terminé Intranet local 100%

6. Allez en bas de page



Residential Gateway Configuration: Wireless - Primary Network - Windows Internet Explorer

http://192.168.0.1/wlanPrimaryNetwork.asp

Fichier Edition Affichage Favoris Outils 2

Favoris Chapter 3. Utilisation avan... Forums ADSL Ariase - Numé... aboutblank Sites suggérées Cacti eroom Magic

Residential Gateway Configuration: Wireless - Primary...

Radio

Primary Network

Access Control

Advanced

Bridging

© - Thomson - 2007

Primary Network THOMSON (00:18:9b:a1:b7:2a)

Network Name (SSID) THOMSON

Closed Network Open

WPA Disabled

WPA-PSK Enabled

WPA2 Disabled

WPA2-PSK Enabled

WPA/WPA2 Encryption TKIP

WPA Pre-Shared Key 12345678

Show Key

RADIUS Server 0.0.0.0

RADIUS Port 1812

RADIUS Key

Group Key Rotation Interval 0

WPA/WPA2 Re-auth Interval 3600

WEP Encryption Disabled

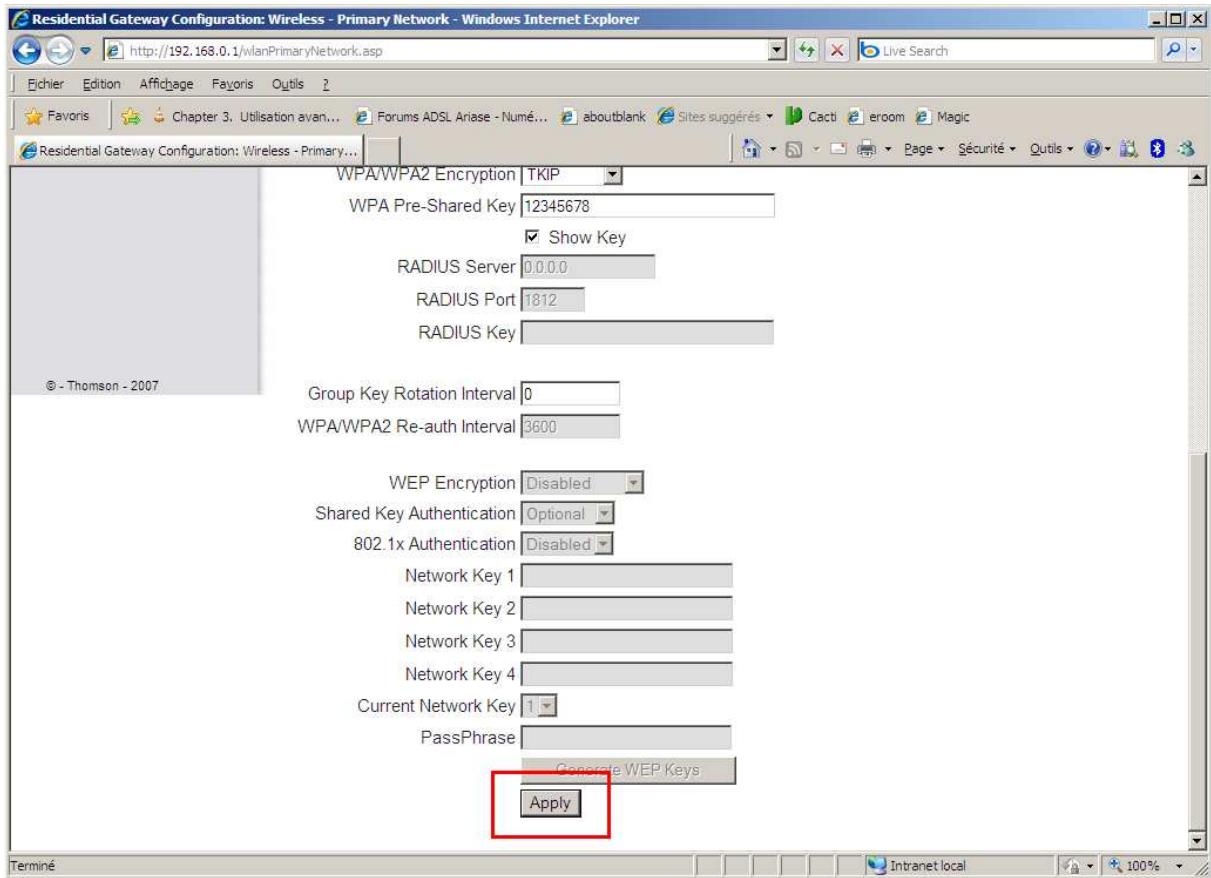
Shared Key Authentication Optional

802.1x Authentication Disabled

Network Key 1

Terminé Intranet local 100%

7. En bas de la page, cliquer sur « Apply »



Residential Gateway Configuration: Wireless - Primary Network - Windows Internet Explorer

http://192.168.0.1/wlanPrimaryNetwork.asp

Fichier Edition Affichage Favoris Outils 2

Residential Gateway Configuration: Wireless - Primary...

WPA/WPA2 Encryption TKIP

WPA Pre-Shared Key 12345678

Show Key

RADIUS Server 0.0.0.0

RADIUS Port 1812

RADIUS Key

© - Thomson - 2007

Group Key Rotation Interval 0

WPA/WPA2 Re-auth Interval 3600

WEP Encryption Disabled

Shared Key Authentication Optional

802.1x Authentication Disabled

Network Key 1

Network Key 2

Network Key 3

Network Key 4

Current Network Key 1

PassPhrase

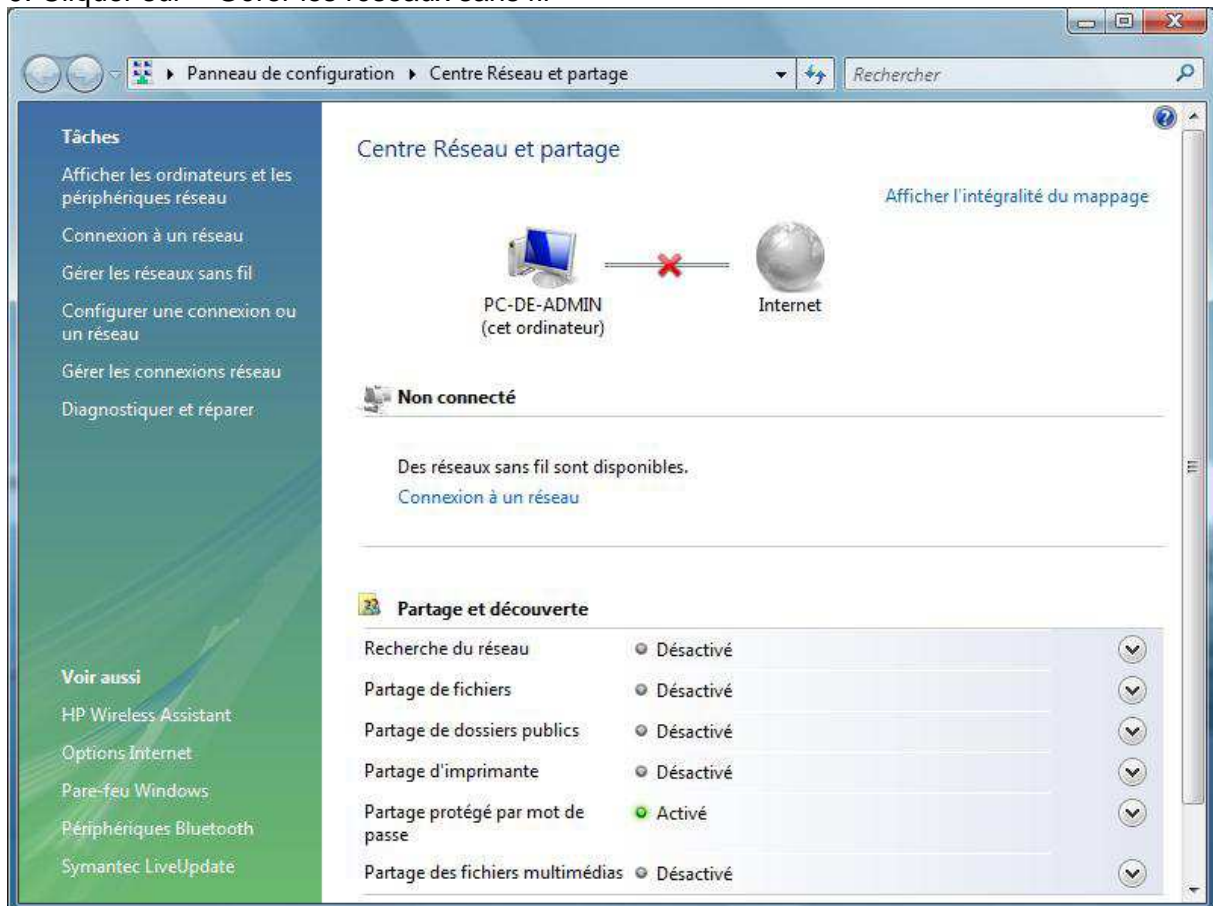
Generate WEP Keys

Apply

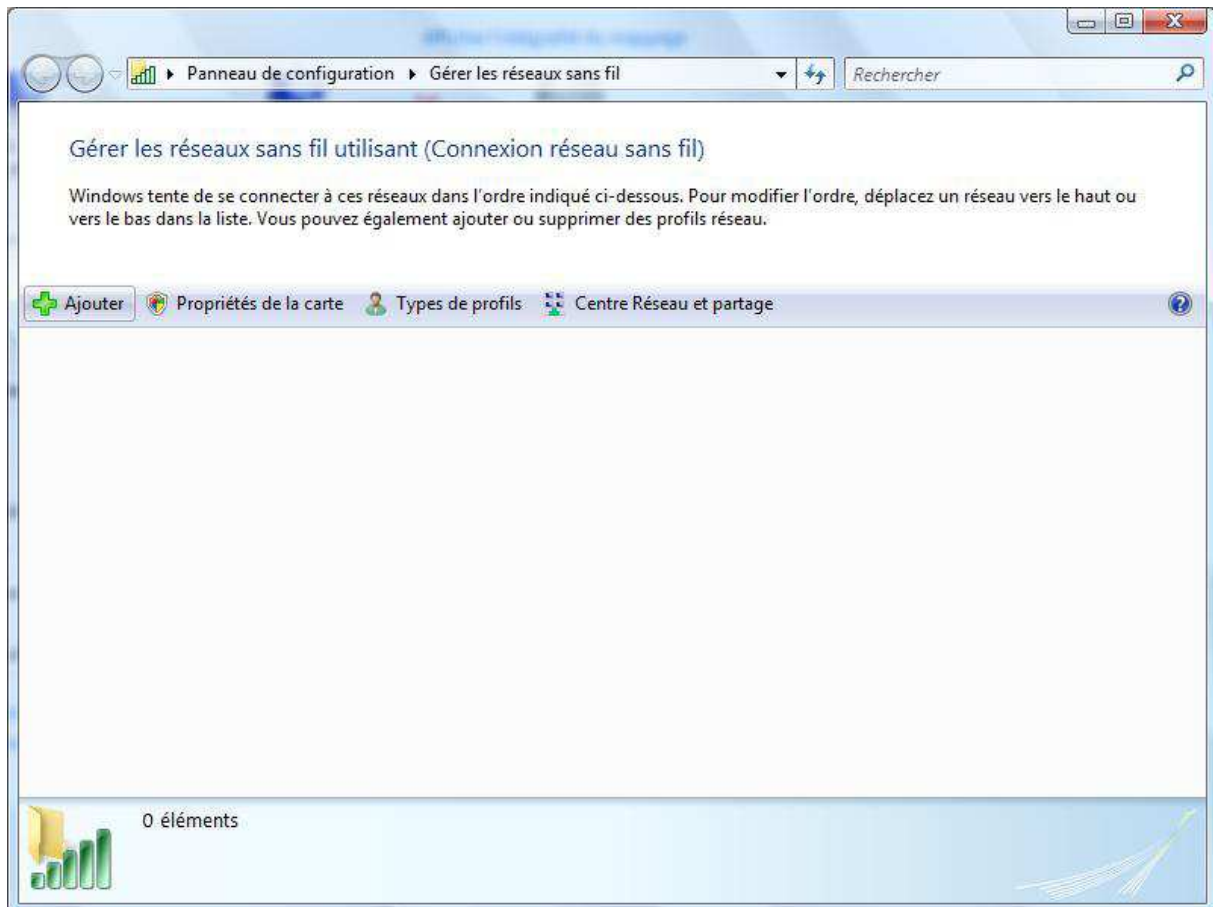
Terminé Intranet local 100%

8. Sous Windows, Aller dans « panneau de configuration », puis cliquer sur « Centre Réseau et partage ».

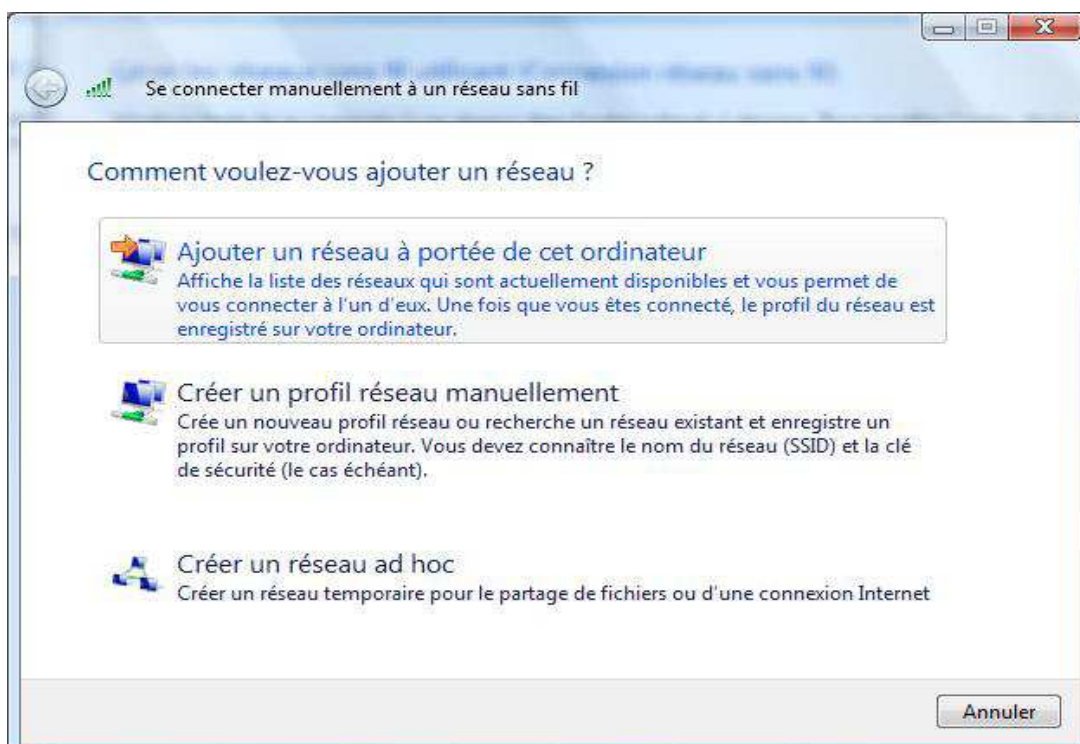
9. Cliquer sur « Gérer les réseaux sans fil »



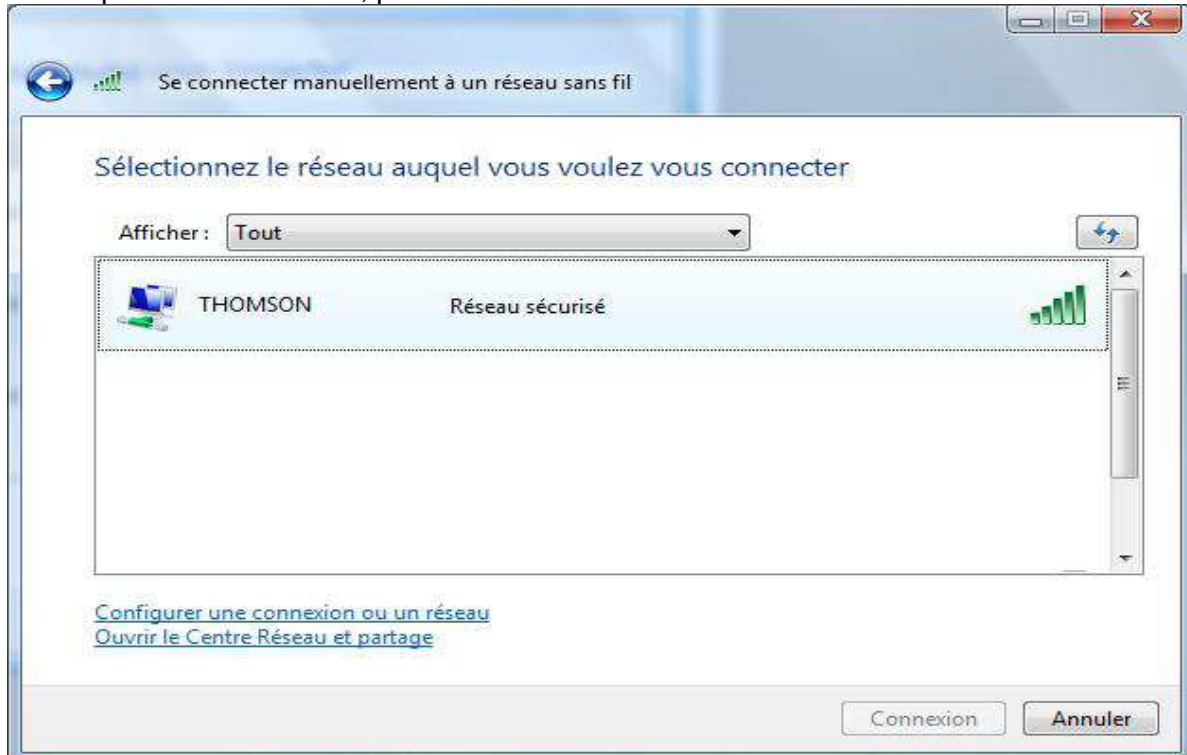
10. Cliquer sur le bouton « Ajouter »



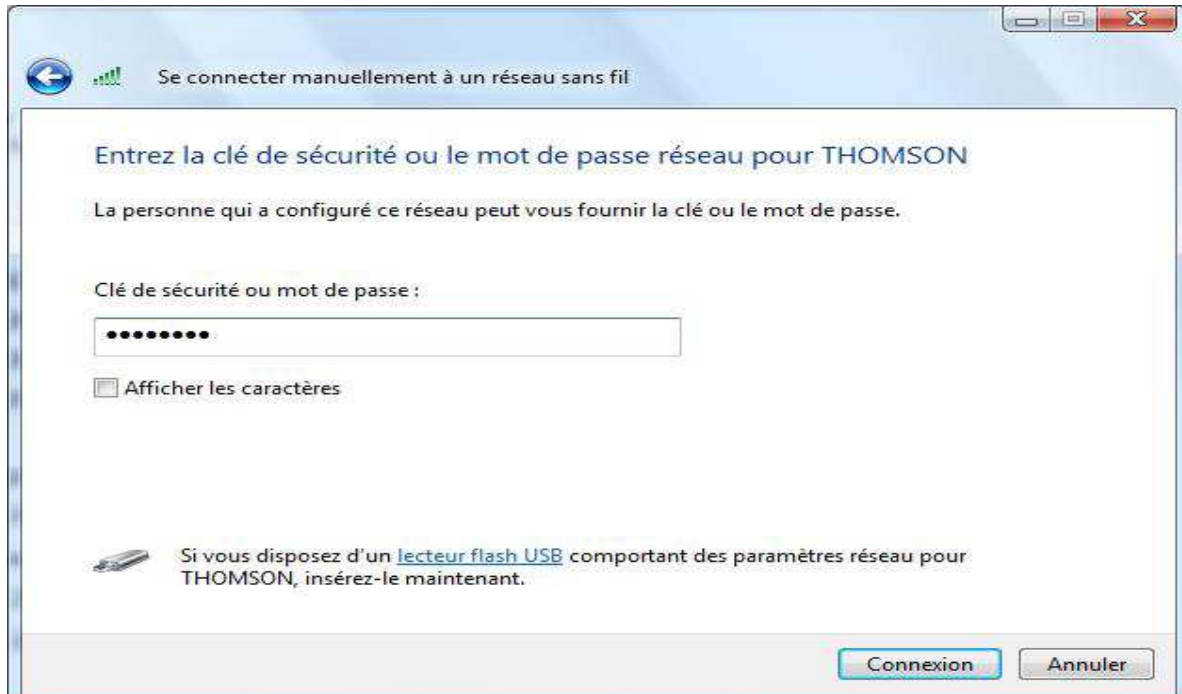
11. Cliquer sur « Ajouter un réseau à portée de cette ordinateur »

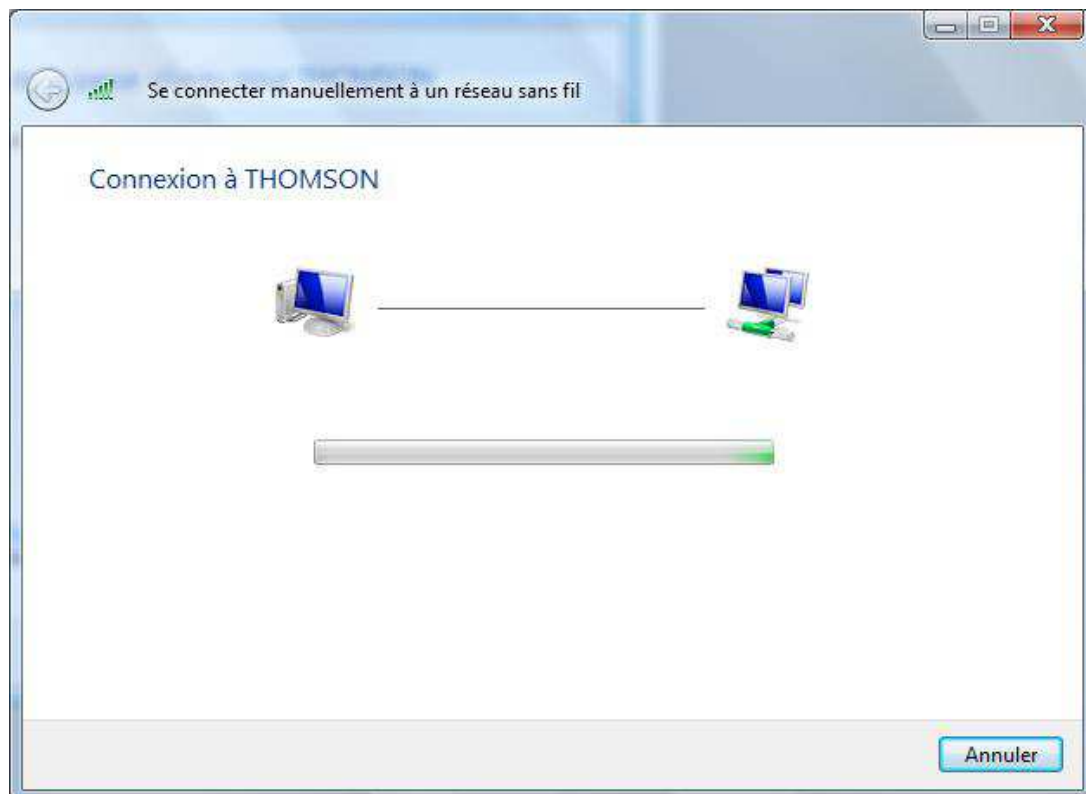


12. Cliquer « THOMSON », puis le bouton « connexion »

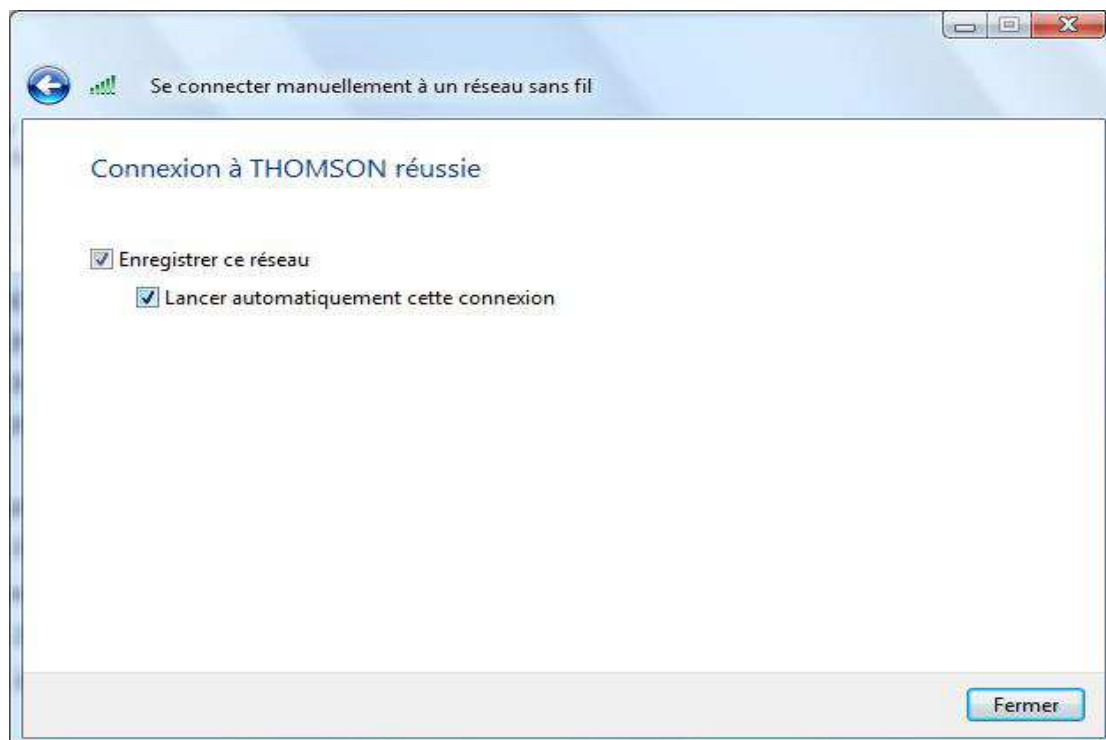


13. Dans le champ « Clé de sécurité ou mot de passe », retaper le mot de passe enregistré précédemment dans le modem.





14. Cocher les cases « Enregistrer ce réseau » et « Lancer automatiquement cette connexion », puis cliquer sur le bouton « Fermer ».



Bravo, vous avez sécurisé votre liaison wifi.