

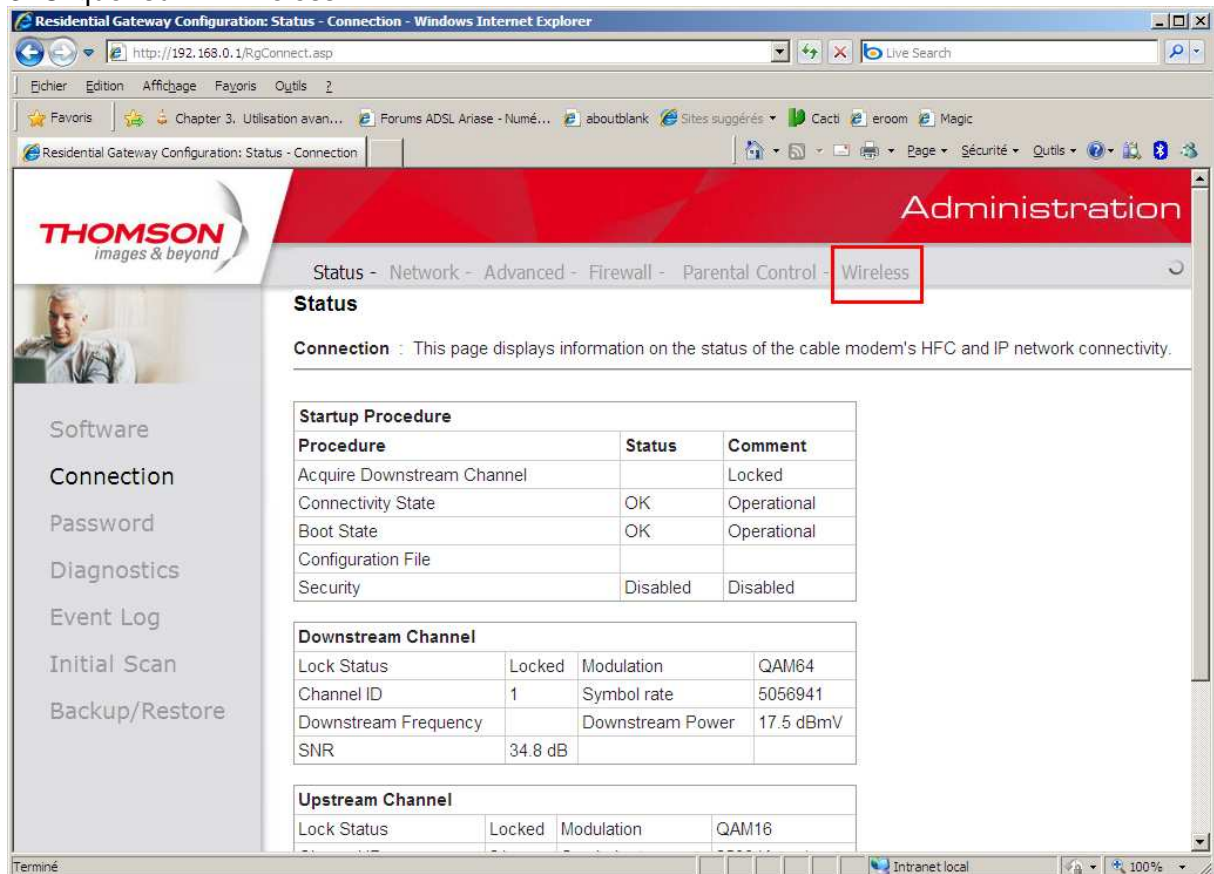
Sécuriser la connexion wifi – version XP

Procédure configuration wifi avancée :

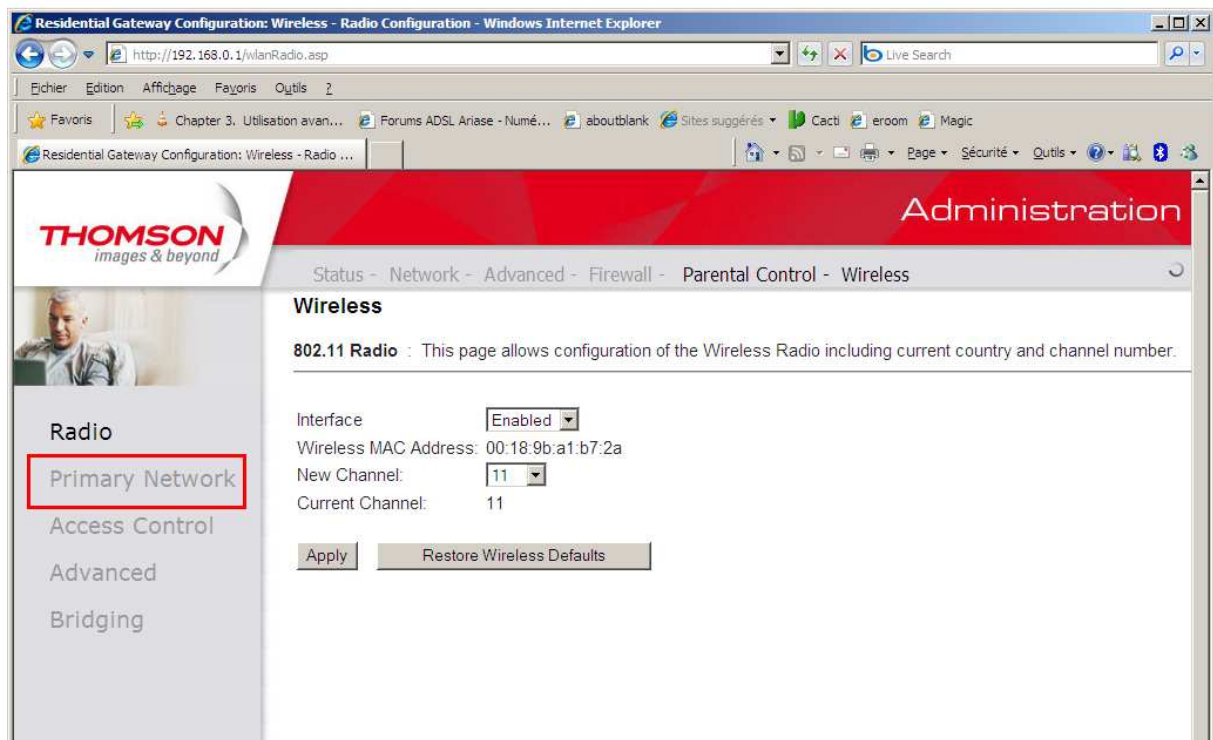
1. Se connecter en Ethernet au Modem.
Ouvrir un navigateur web.
Taper l'URL : http://192.168.0.1
2. Remplir le champ « mot de passe » avec la valeur « admin »



3. Cliquer sur « Wireless »

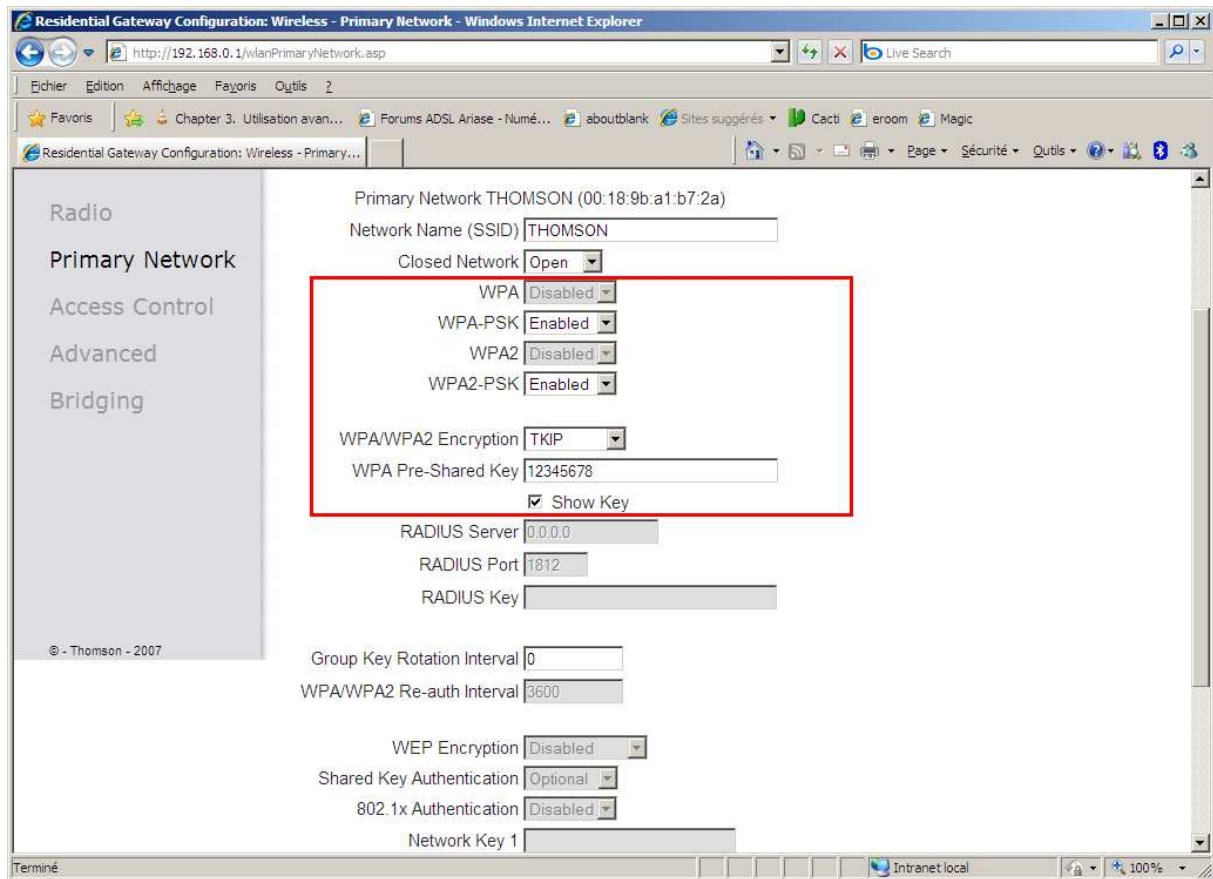


4. Dans le menu de gauche, cliquer sur « Primary Network »



The screenshot shows a web browser window titled "Residential Gateway Configuration: Wireless - Radio Configuration - Windows Internet Explorer". The address bar shows "http://192.168.0.1/wlanRadio.asp". The browser's menu bar includes "Fichier", "Edition", "Affichage", "Favoris", and "Outils". The address bar contains several bookmarks, including "Chapter 3. Utilisation avan...", "Forums ADSL Ariase - Numé...", "aboutblank", "Sites suggérés", "Cacti", "eroom", and "Magic". The main content area displays the Thomson logo and the word "Administration". A navigation menu includes "Status", "Network", "Advanced", "Firewall", "Parental Control", and "Wireless". The "Wireless" section is active, showing the "802.11 Radio" configuration. The "Interface" is set to "Enabled", the "Wireless MAC Address" is "00:18:9b:a1:b7:2a", the "New Channel" is "11", and the "Current Channel" is "11". There are "Apply" and "Restore Wireless Defaults" buttons.

5. Sélectionner « Enebled » dans les champs « WPA-PSK ».
Dans le champ « WPA Pre-shared Key », entrer un mot de passe d'au moins 8 caractères



Residential Gateway Configuration: Wireless - Primary Network - Windows Internet Explorer

http://192.168.0.1/wlanPrimaryNetwork.asp

Fichier Edition Affichage Favoris Outils 2

Favorites Chapter 3. Utilisation avan... Forums ADSL Ariase - Numé... aboutblank Sites suggérés Cacti eroom Magic

Residential Gateway Configuration: Wireless - Primary...

Radio

Primary Network

Access Control

Advanced

Bridging

© - Thomson - 2007

Primary Network THOMSON (00:18:9b:a1:b7:2a)

Network Name (SSID) THOMSON

Closed Network Open

WPA Disabled

WPA-PSK Enabled

WPA2 Disabled

WPA2-PSK Enabled

WPA/WPA2 Encryption TKIP

WPA Pre-Shared Key 12345678

Show Key

RADIUS Server 0.0.0.0

RADIUS Port 1812

RADIUS Key

Group Key Rotation Interval 0

WPA/WPA2 Re-auth Interval 3600

WEP Encryption Disabled

Shared Key Authentication Optional

802.1x Authentication Disabled

Network Key 1

Terminé Intranet local 100%

6. Allez en bas de page

Residential Gateway Configuration: Wireless - Primary Network - Windows Internet Explorer

http://192.168.0.1/wlanPrimaryNetwork.asp

Radio

Primary Network

Access Control

Advanced

Bridging

Primary Network THOMSON (00:18:9b:a1:b7:2a)

Network Name (SSID) THOMSON

Closed Network Open

WPA Disabled

WPA-PSK Enabled

WPA2 Disabled

WPA2-PSK Enabled

WPA/WPA2 Encryption TKIP

WPA Pre-Shared Key 12345678

Show Key

RADIUS Server 0.0.0.0

RADIUS Port 1812

RADIUS Key

Group Key Rotation Interval 0

WPA/WPA2 Re-auth Interval 3600

WEP Encryption Disabled

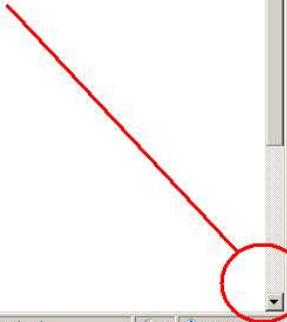
Shared Key Authentication Optional

802.1x Authentication Disabled

Network Key 1

© - Thomson - 2007

Terminé



7. En bas de la page, cliquer sur « Apply »

Residential Gateway Configuration: Wireless - Primary Network - Windows Internet Explorer

http://192.168.0.1/wlanPrimaryNetwork.asp

WPA/WPA2 Encryption TKIP

WPA Pre-Shared Key 12345678

Show Key

RADIUS Server 0.0.0.0

RADIUS Port 1812

RADIUS Key

Group Key Rotation Interval 0

WPA/WPA2 Re-auth Interval 3600

WEP Encryption Disabled

Shared Key Authentication Optional

802.1x Authentication Disabled

Network Key 1

Network Key 2

Network Key 3

Network Key 4

Current Network Key 1

PassPhrase

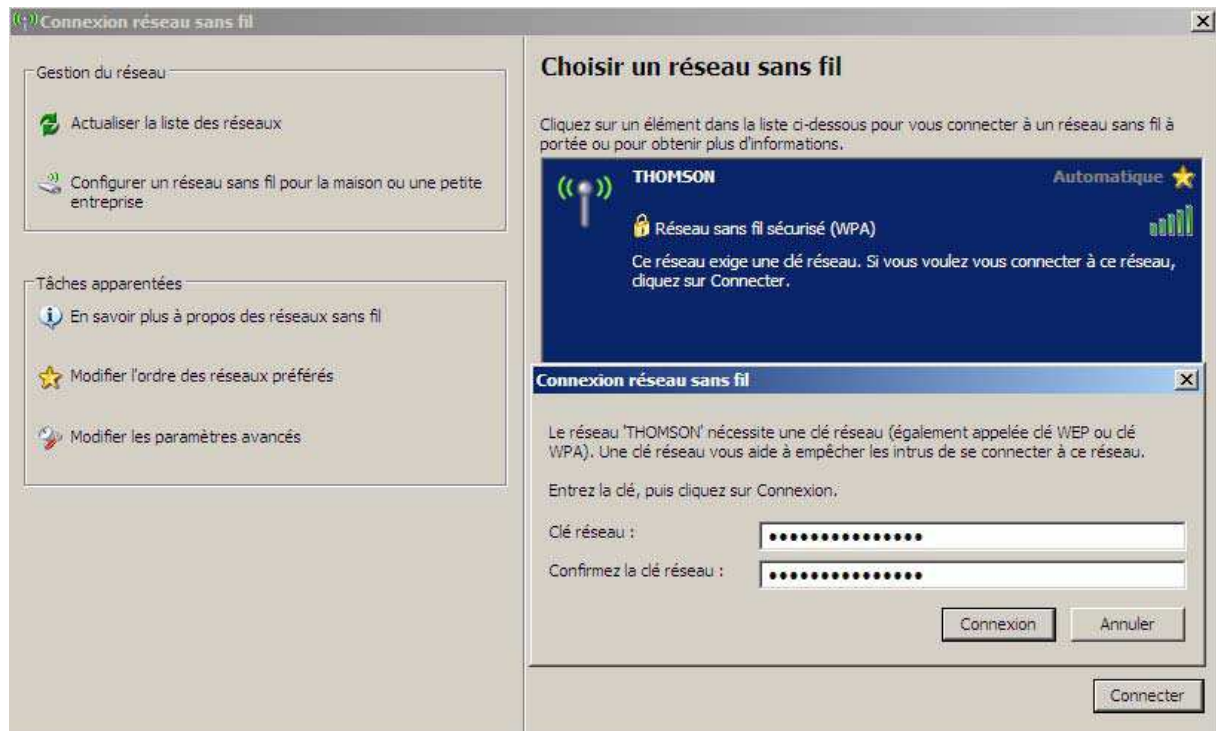
Generate WEP Keys

Apply

© - Thomson - 2007

Terminé

8. Sous Windows ,cliquer sur « THOMSON » puis « connecter », puis renseigner le mot de passe donné précédemment.



Bravo, vous avez sécurisé votre liaison wifi.